

D3400

DX

I AM



www.nikon-asia.com

At the heart of the image



• Lens: AF-P DX NIKKOR 18-55mm f/3.5-5.6G VR • Exposure: [A] mode, 1/800 second, f/5.6 • White balance: Auto • Sensitivity: ISO 100 • Picture Control: Standard ©Kenta Aminata



Amazing images, always connected

Some moments in life are too good to keep to yourself. With Nikon's D3400 D-SLR camera, you can capture the excitement beautifully and share it right away. Working with the SnapBridge app, the camera establishes a constant connection with your smart device via *Bluetooth*^{®*1}. Each amazing picture you take is transferred to your device automatically*², letting you post it online without missing a beat. And when you share those pictures with your friends, they're sure to be impressed by the incredible image quality. That's the D3400 effect: it makes enthusiasm contagious.

- Automatic image transfer*² to smart device with SnapBridge app
- Superior image quality thanks to image sensor featuring 24.2 effective megapixels, and EXPEED 4 image-processing engine
- Wide ISO range up to ISO 25600 for beautiful images even at night or indoors
- Guide mode providing step-by-step assistance for camera use
- Long battery life letting you shoot up to approx. 1,200 shots per charge*³
- Easy handling with lightweight, ergonomic body

*¹ *Bluetooth*[®] communication is available when the camera is connected to a smart device with the SnapBridge app installed. Wi-Fi[®] communication is not available.
*² Image size is reduced to 2 megapixels (JPEG) for automatic image transfer.
*³ Based on CIPA standards. In single-frame release mode. *Bluetooth*[®] is not used.

D3400



Share photos via SnapBridge

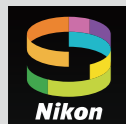
Easily share impressive D-SLR pictures: Automatic image transfer to your smart device

Imagine how easy it would be to post pictures online if they were saved to your smart device as soon as you took them. SnapBridge creates a constant connection between your D3400 and a compatible smart device via *Bluetooth*[®], and automatically transfers smart-device friendly 2-megapixel images as you shoot. This communication isn't just one-way: it offers added conveniences, including automatic syncing of the camera's date, time and location information to that of the smart device.

The image transfer process will not be affected even if you have the camera stored in a bag nearby.

You can download original-sized pictures via manual browsing and selection on the app.

Note: • Videos cannot be transferred from the D3400. • Remote shooting using the SnapBridge app is not available. Optional ML-L3 Wireless Remote Control is available for this purpose.



Download the SnapBridge app to get started!

Take advantage of automatic picture transfers by downloading the SnapBridge app onto your compatible smart device now. The app connects the D3400 with a compatible iPhone[®], iPad[®], and iPod touch[®] or smart devices running on the Android[™] operating system. The app is available free from the official website (snapbridge.nikon.com), Apple App Store[®] and Google Play[™].



Note: • Android 5.0 or later, or 6.0.1 or later is required. • A device with *Bluetooth*[®] 4.0 or later (i.e. a device that supports *Bluetooth*[®] Low Energy) is necessary.

Register for your Nikon ID and enjoy free, unlimited automatic uploads of thumbnails to NIKON IMAGE SPACE

Connect your D3400 to a smart device and register for your Nikon ID to receive unlimited online storage for thumbnail pictures on NIKON IMAGE SPACE for free. Thereafter, you can choose to upload thumbnail pictures*¹ automatically from the SnapBridge app. Nikon ID registration*² automatically signs you up as a member of Nikon's online cloud storage service. In addition to the unlimited storage of thumbnail pictures*¹, it gives you 20 GB of free storage for original pictures and other large images. With pictures being uploaded to NIKON IMAGE SPACE, it is now easier to check the history of the pictures captured. Nikon ID registration is easy, as your camera's model name and serial number will already be entered when you first launch the SnapBridge app. So sign up and take full advantage of SnapBridge today.

*1 1920 x 1080 pixel equivalent.

*2 If you are a member of NIKON IMAGE SPACE, you can use the same ID and password for your Nikon ID registration.

NIKON IMAGE SPACE nikonimagespace.com



Establishing a connection is simple — and you only need to do it once

Pairing your D3400 and compatible smart device is a breeze with SnapBridge. Simply follow the instructions given by the app and camera, and a connection will be automatically established between the two. What's more, the camera automatically detects smart devices that have been connected before, so you only need to go through the process once for each device.

PAIRING STEPS

Step 1

When turning on the camera for the first time, this dialog box appears. Press OK to start pairing the camera with your smart device. You can also access this screen from the camera's setup menu.



Step 2

Launch the SnapBridge app on your smart device, follow the on-screen instructions and tap the name of the camera you want to pair it with.



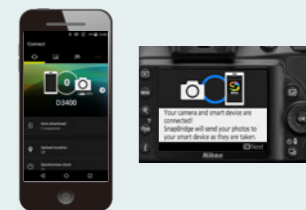
Step 3

Confirm the same six-digit authentication code on the camera and smart device display*¹. To complete pairing, press the OK button on the camera and tap "Pair"*² on the smart device.



Step 4

These screens confirm you have established a connection between the camera and smart device.



*1 Some versions of iOS may not display the code.
*2 Button name may vary depending on the smart device model.



• Lens: AF-P DX NIKKOR 18-55mm f/3.5-5.6G VR • Exposure: [A] mode, 1/250 second, f/8 • White balance: Direct sunlight • Sensitivity: ISO 1600 • Picture Control: Standard ©Gabriela Herman

⋮ Experience the superior D-SLR image quality ⋮

Crisp action shots, portraits with soft backgrounds and more

If the photos taken with your smart device leave you wanting more, just wait until you get your hands on the D3400. Capture amazing indoor gigs and party moments with minimal blur. Impressive portraits make your subjects stand out against beautifully soft backgrounds. Zooming in on distant subjects is possible without losing any image resolution. Thanks to a range of exclusive Nikon technologies, the D3400 lets you do all this — and much, much more.



Technologies behind the image quality

The superb images you get with the D3400 are attained through a combination of unrivaled Nikon technologies working together. The D3400 achieves a wide standard sensitivity range of ISO 100-25600. Thanks to its EXPEED 4 image-processing engine, which effectively reduces image noise, you get clear pictures even in dark scenes. Harnessing 24.2 effective megapixels and the superb optical performance of NIKKOR lenses, the camera renders your subjects in beautiful, crisp pictures. Finally, there's Nikon's image creation system, Picture Control, which helps make your images look even better.



Fun effects, easy results

Special effects: Unleash your inner artist with 10 easy-to-use effects



Everyone wants to take more creative images and movies. The D3400 incorporates 10 special effects, which you can apply to your pictures and movies before shooting. Simply set the mode dial to “EFFECTS” and make a selection. The resulting image appears on the LCD monitor in real time, so you can confirm how it will look before you shoot.

Special effects available with the D3400 :

- Night Vision
- Super vivid
- Pop
- Photo illustration*1
- Toy camera effect
- Miniature effect*2
- Selective color
- Silhouette
- High key
- Low key

*1 Movies shot in this mode play back like a slide show made up of a series of stills.
*2 Movies shot in this mode play back at high speed. Sound is not recorded with movies. The built-in flash and AF-assist illuminator turn off.

Retouch menu: 20 options for editing images, right in your camera

The D3400 lets you edit images and movies right in the camera. With 20 in-camera retouch menu options, including the new painting option, it is easy to enhance or add a creative touch to your pictures. You can trim and resize images, or have fun with options like the fisheye effect and image overlay. Three special effects — photo illustration, miniature effect and selective color — can be added in post-production using this retouch menu.

Retouch menu on the D3400 :

- NEF (RAW) processing
- Trim
- Resize
- D-Lighting
- Quick retouch
- Red-eye correction
- Straighten
- Distortion control
- Perspective control
- Fisheye
- Filter effects
- Monochrome
- Image overlay
- Color outline
- Photo illustration
- Color sketch
- Miniature effect
- Selective color
- Painting
- Edit movie
- Side-by-side comparison



Guide mode: Show water flowing ©Gabriela Herman

Scene modes: A quick solution for each subject



Scene modes are an easy way to get great pictures, without the need to adjust numerous settings. Simply rotate the mode dial to one of six icons according to your subject or scene. The D3400 automatically uses the most appropriate settings and delivers beautiful results.

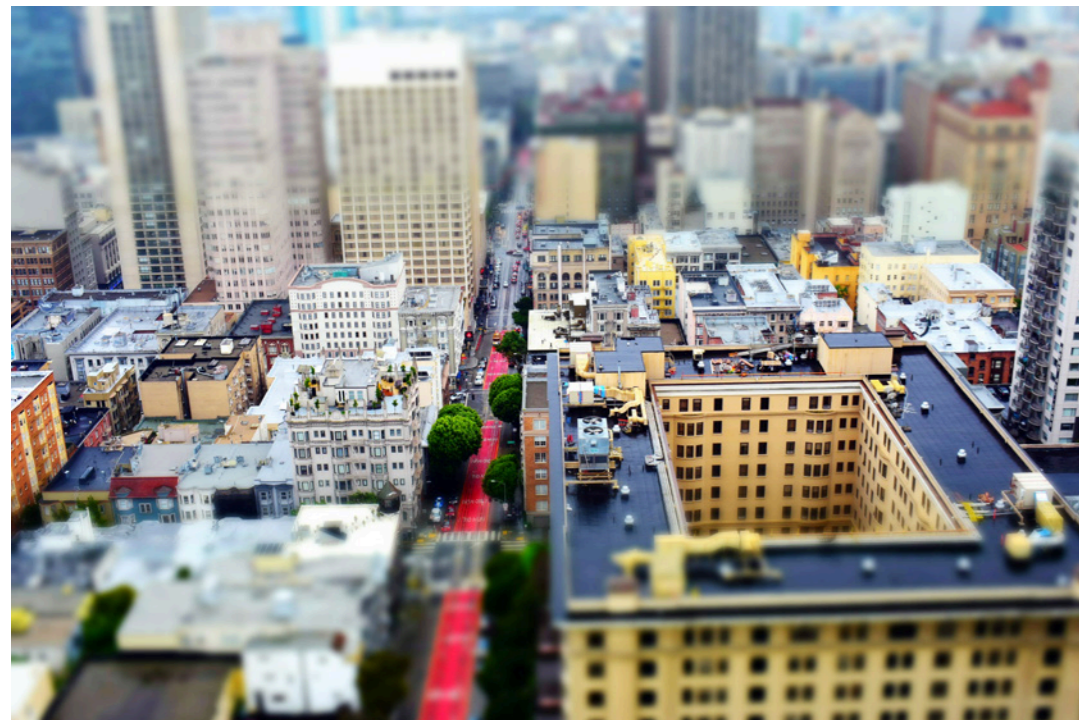
The D3400 scene modes :

- Portrait
- Landscape
- Child
- Sports
- Close up
- Night portrait

Guide mode: Step-by-step assistance, whenever you need it



Even if you’ve never used a D-SLR before, the D3400 is easy to get to grips with. Its built-in guide mode is designed to help beginners learn more about D-SLR photography. Guide mode leads you through each step of the process, from setting up the camera to shooting, viewing/deleting and retouching images. For instance, if you want to take a picture with a blurred background, simply rotate the mode dial to “GUIDE” and select “soften backgrounds” from the “Shoot/Advanced operation” option. The camera displays an assist image, so you can confirm how the setting will change your picture.



Special effects: Miniature effect ©Gabriela Herman



Scene mode: Landscape ©Gabriela Herman



Retouch menu: Filter effects (Cross screen) ©Gabriela Herman



Guide mode: Soften backgrounds ©Gabriela Herman

∴ Compact body, effortless handling ∴

Small, lightweight ergonomic body in a choice of two colors

The D3400 is designed to offer great image quality within a small, stylish D-SLR body. Its comfortable, ergonomic grip lets you hold the camera firmly to minimize vibration. Paired with the AF-P DX NIKKOR 18-55mm f/3.5-5.6G VR kit lens featuring a retractable system, it makes for a remarkably compact D-SLR set. Its sleek, sophisticated form factor will fit perfectly into any lifestyle, and comes in a choice of two colors, black or red.

Long-life battery lasts up to approx. 1,200 shots per charge



No more worrying about the battery running out while taking pictures with the D3400. Its efficient, energy-saving design allows you to shoot approx. 1,200 shots per charge*

with the EN-EL14a Rechargeable Li-ion Battery. Even when the camera is constantly connected to your smart device via SnapBridge for automatic image transfer, the battery lasts for hours.

* Based on CIPA Standards. In single-frame release mode. Bluetooth® is not used.
 Note: Battery power is used for wireless communication even when the camera is turned off. If you do not require automatic image transfer, you can change the "Send while off" setting to "Off" to conserve power.

Live view shooting with large LCD monitor

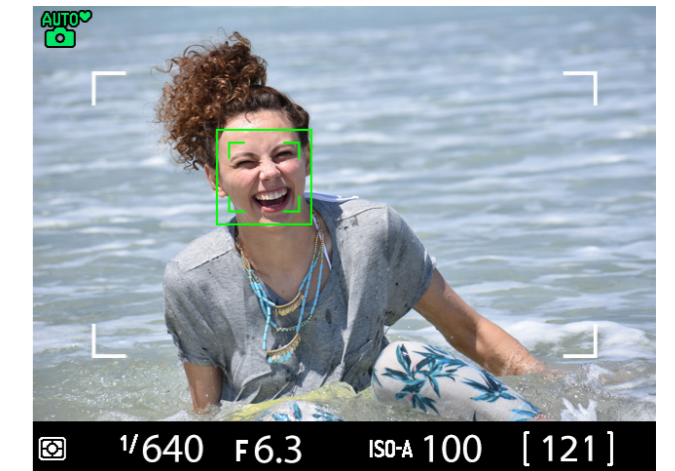
With its large, 7.5-cm/3.0-in. LCD monitor, the D3400 lets you enjoy comfortable live view shooting, the way you would with a smartphone or compact digital camera. Live view shooting is great for casual snapshots, as well as for still-life shooting. Moreover, the camera's approx. 100% frame coverage makes it simpler to frame your shot.



Scene auto selector: Easy shooting in live view

When shooting in live view, setting the mode dial to auto or auto (flash off) enables the camera to automatically activate the most suitable scene mode*. The icon of the selected mode, such as landscape or portrait, is displayed in the top left of the monitor.

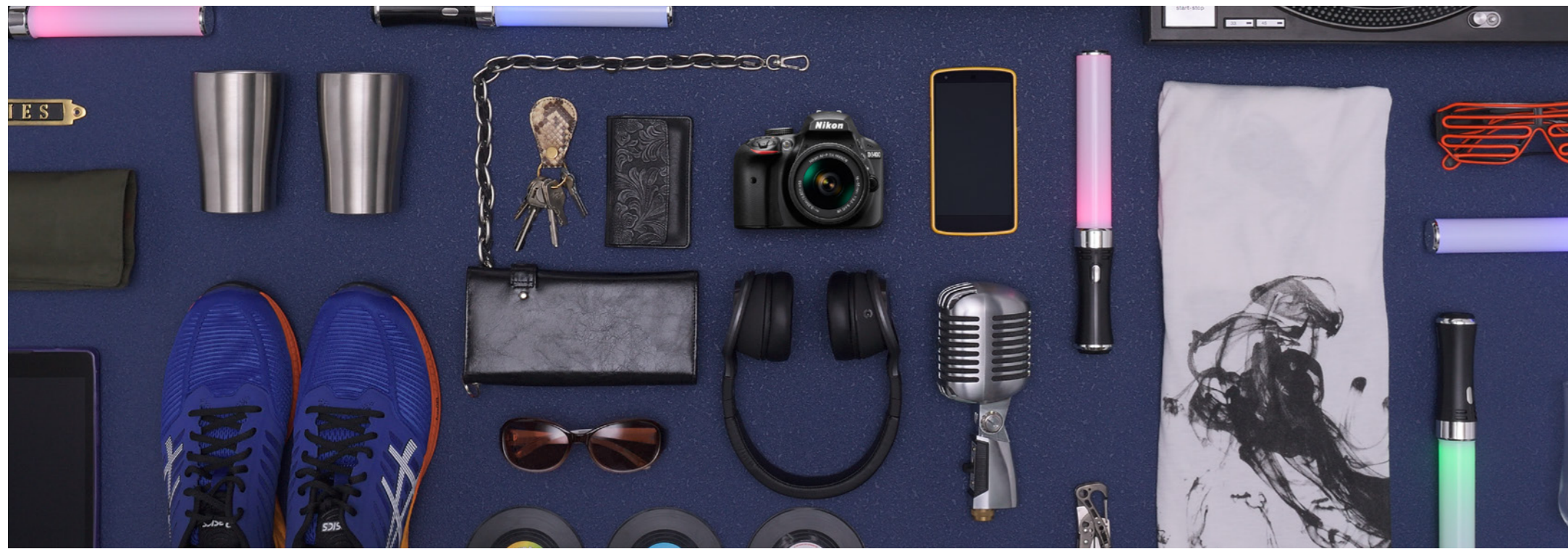
* When using autofocus.



The D3400 scene modes activated by scene auto selector:

- Auto • Auto (Flash off) • Portrait • Close up • Landscape
- Night portrait

Note: For situations not covered by portrait, landscape, close up or night portrait, auto or auto (flash off) will be selected.





∴ Capture fleeting moments in stills and movies ∴



Viewfinder shooting: Track moving subjects with confidence

One of the D-SLR benefits is the viewfinder. To track fast or erratic subjects from a distance, it is the most surefire way of nailing the shot. Unlike taking pictures with a smart device, shooting through the viewfinder gives a firmer grip of the camera, keeping it level and minimizing camera shake.

Capture moments in fast action: 5-fps continuous shooting

Whether you are on the street, the beach or the dance floor, sometimes the best moment only lasts for a split second. The D3400 offers high-speed continuous shooting of up to approx. 5 frames per second*¹, that is sustainable up to 100 frames*². At that pace, you won't miss a thing.

*1 Assumes manual focus (MF), manual (M) or shutter-priority auto (S), a shutter speed of 1/250 s or faster and other settings at default values.
 *2 When pictures are shot in JPEG image quality and at ISO 100, and a 16-GB SanDisk Extreme Pro SDHC UHS-I card is used for storage.



Cleanly capture moving subjects: 11-point AF system and four AF-area modes

The D3400's quick, accurate 11-point AF system helps you capture unpredictable and fast-moving subjects in sharp focus. A cross-type sensor covers the most frequently used center point to deliver superior subject-acquisition and focusing performance. Nikon's unique Scene Recognition System helps the D3400 detect subjects and changes in composition rapidly. There are four AF-area modes to choose from. In auto-area AF mode, the camera detects subject, foreground and background to achieve focus at the appropriate point. In 3D-tracking (11 points) mode, the focus point automatically changes to track the subject as long as the shutter-release button is pressed halfway, even



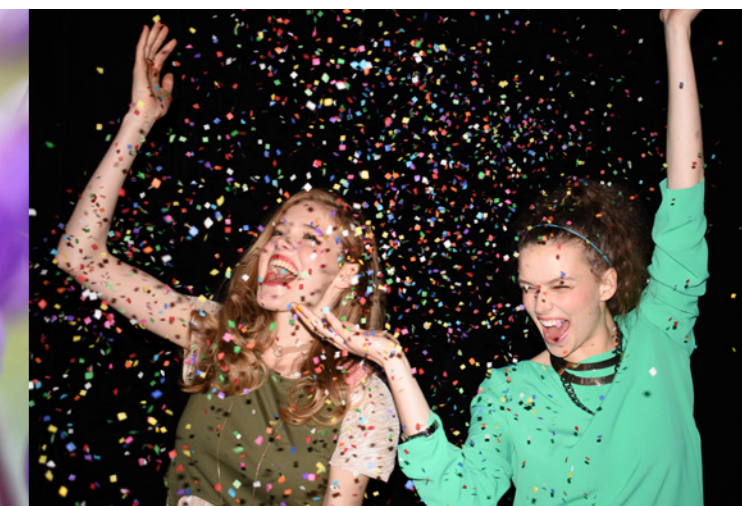
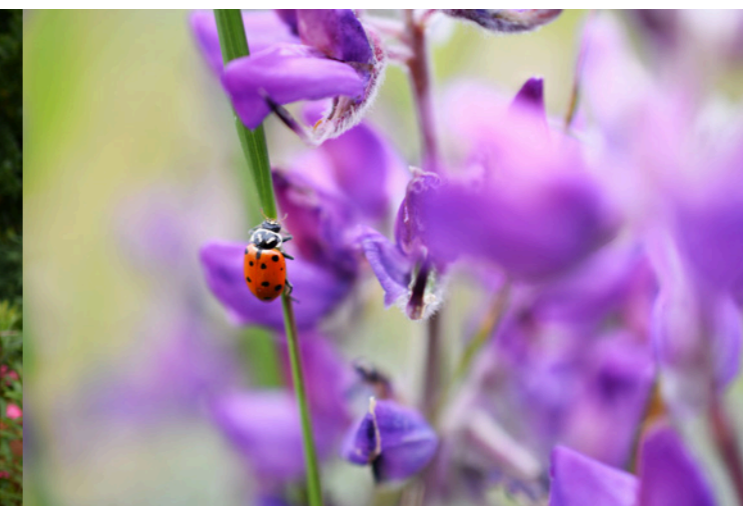
if the subject moves or the composition changes. Single-point AF and dynamic-area AF are also available.

Experience high-quality videos with your D-SLR: D-Movie supports Full HD videos at 60p

The D3400 doesn't just shoot superb photos: it is also capable of creating smooth, sharp Full HD movies at 60p. The camera yields beautiful videos even in dark scenes, thanks to a wide standard sensitivity range of ISO 100-25600 — the same as when shooting stills. Your videos can also take advantage of the beautiful background blur and superior rendering of NIKKOR lenses.



⋮ Explore your creativity further ⋮



• Lens: AF-P DX NIKKOR 18-55mm f/3.5-5.6G VR • Exposure: [A] mode, 1/400 second, f/5.6
• White balance: Auto • Sensitivity: ISO 100 • Picture Control: Standard ©Kenta Aminaka

• Lens: AF-P DX NIKKOR 70-300mm f/4.5-6.3G ED VR • Exposure: [A] mode, 1/640 second, f/4.8
• White balance: Auto • Sensitivity: ISO 400 • Picture Control: Standard ©Kenta Aminaka

• Lens: AF-P DX NIKKOR 70-300mm f/4.5-6.3G ED VR • Exposure: [P] mode, 1/1250 second, f/9
• White balance: Auto • Sensitivity: ISO 400 • Picture Control: Standard ©Gabriela Herman

• Lens: AF-S DX NIKKOR 35mm f/1.8G • Exposure: [A] mode, 1/1600 second, f/2.8
• White balance: Auto • Sensitivity: ISO 100 • Picture Control: Standard ©Kenta Aminaka

• Lens: AF-S DX Micro NIKKOR 40mm f/2.8G • Exposure: [A] mode, 1/400 second, f/3.3
• White balance: Auto • Sensitivity: ISO 100 • Picture Control: Standard ©Gabriela Herman

• Lens: AF-P DX NIKKOR 18-55mm f/3.5-5.6G VR • Exposure: [S] mode, 1/200 second, f/4 • White balance: Auto
• Sensitivity: ISO 100 • Picture Control: Standard • Flash: Built-in Flash ©Kenta Aminaka

Choose your view: NIKKOR lenses

Image quality depends on the performance of the lens. Thanks to the advanced optical and production technologies accumulated over the years, all NIKKOR lenses, including kit lenses, achieve excellent image reproduction at high resolutions. Nikon has implemented cutting-edge technologies such as Vibration Reduction (VR) which compensates for camera shake, and the wide variety of NIKKOR lenses lets you enjoy a whole new world of creative expression.



100 million NIKKOR



AF-P DX NIKKOR 18-55mm f/3.5-5.6G VR

This compact and lightweight zoom lens incorporates a stepping motor for fast and quiet AF operation. Two aspherical lens elements minimize lens aberrations. The VR system provides an effect equivalent to a shutter speed 4.0 stops faster*. A setting system using the camera menus allows some lens settings on the camera. A great choice for entry-class D-SLR users.



AF-P DX NIKKOR 70-300mm f/4.5-6.3G ED VR

Telephoto zoom lens offering approx. 4.3x zoom coverage. With a stepping motor ensuring fast and quiet AF operation, this lens is suitable for shooting movies. Its VR system, which can be activated via the D3400's shooting menu, provides an effect equivalent to a shutter speed 4.0 stops faster*, while its ED glass element contributes to achieving superb image quality.



AF-S DX NIKKOR 35mm f/1.8G

Thanks to a maximum aperture of f/1.8, this lens helps create striking portraits with beautiful soft backgrounds that make your subject stand out. The large aperture also ensures that your pictures turn out great in low light, even without a tripod.



AF-S DX Micro NIKKOR 40mm f/2.8G

This compact, lightweight micro lens dynamically captures small subjects, while creating beautiful bokeh. It's perfectly suited for taking stunning close-ups of subjects ranging from flowers to cakes.

* Based on CIPA Standards. This value is achieved when attached to a DX-format D-SLR camera, with zoom set at the maximum telephoto position.

Control the light, improve image quality: Nikon Speedlights

Light makes all the difference in photography. While the D3400 has a convenient built-in pop-up flash, employing an optional Speedlight helps take your images to the next level.



Compact, lightweight SB-500 Speedlight with high-performance LED light (optional)



The SB-500 is a compact, lightweight flash. With a guide number of 24/78.7 (m/ft, ISO 100, 23°C/73.4°F), its flash head tilts up to 90° and rotates horizontally 180° for bounce flash which adds natural light. The built-in LED light (with a choice of three output levels) has a color temperature close to sunlight, and can serve as an auxiliary light for both still and movie shooting.

Nikon Digital SLR Camera D3400 Specifications

Type	Single-lens reflex digital camera
Type	Single-lens reflex digital camera
Lens mount	Nikon F mount (with AF contacts)
Effective angle of view	Nikon DX format; focal length equivalent to approx. 1.5× that of lenses with FX-format angle of view
Effective pixels	
Effective pixels	24.2 million
Image sensor	
Image sensor	23.5 × 15.6 mm CMOS sensor
Total pixels	24.72 million
Dust-reduction system	Image Dust Off reference data (Capture NX-D software required)
Storage	
Image size (pixels)	• 6000 × 4000 (large) • 4496 × 3000 (medium) • 2992 × 2000 (small)
File format	• NEF (RAW): 12 bit, compressed • JPEG: JPEG-Baseline compliant with fine (approx. 1 : 4), normal (approx. 1 : 8) or basic (approx. 1 : 16) compression • NEF (RAW) + JPEG: Single photograph recorded in both NEF (RAW) and JPEG formats
Picture Control System	Standard, Neutral, Vivid, Monochrome, Portrait, Landscape, Flat; selected Picture Control can be modified
Media	SD (Secure Digital) and UHS-I compliant SDHC and SDXC memory cards
File system	DCF 2.0, Exif 2.3, PictBridge
Viewfinder	
Viewfinder	Eye-level pentamirror single-lens reflex viewfinder
Frame coverage	Approx. 95% horizontal and 95% vertical
Magnification	Approx. 0.85× (50mm f/1.4 lens at infinity, -1.0 m ⁻¹)
Eye point	18 mm (-1.0 m ⁻¹); from center surface of viewfinder eyepiece lens
Diopter adjustment	-1.7 to +0.5 m ⁻¹
Focusing screen	Type B BriteView Clear Matte Mark VII screen
Reflex mirror	Quick return
Lens aperture	Instant return, electronically controlled
Lens	
Autofocus support	Autofocus is available with AF-P and type E and G AF-S lenses
Shutter	
Type	Electronically controlled vertical-travel focal-plane shutter
Speed	1/4000 to 30 s in steps of 1/3 EV; Bulb/Time
Flash sync speed	X=1/200 s; synchronizes with shutter at 1/200 s or slower
Release	
Release mode	[S] (single frame), [C] (continuous), [L] (quiet shutter release), [S] (self-timer), [2s] (delayed remote; ML-L3), [Q] (quick-response remote; ML-L3)
Frame advance rate	Up to 5 fps (Frame rates assume manual focus, manual or shutter-priority auto exposure, a shutter speed of 1/250 s or faster, and other settings at default values)
Self-timer	2 s, 5 s, 10 s, 20 s; 1 to 9 exposures
Exposure	
Metering	TTL exposure metering using 420-pixel RGB sensor
Metering method	• Matrix metering: 3D color matrix metering II (type E and G lenses) • Center-weighted metering: Weight of 75% given to 8-mm circle in center of frame • Spot metering: Meters 3.5-mm circle (about 2.5% of frame) centered on selected focus point
Range (ISO 100, f/1.4 lens, 20°C/68°F)	• Matrix or center-weighted metering: 0 to 20 EV • Spot metering: 2 to 20 EV
Exposure meter coupling	CPU
Mode	Auto modes ([S] auto; [A] auto (flash off)); programmed auto with flexible program ([P]; shutter-priority auto ([S]; aperture-priority auto ([A]; manual ([M]; scene modes ([S] portrait; [L] landscape; [C] child; [S] sports; [C] close up; [P] night portrait); special effects modes ([N] night vision; [V] super vivid; [POP] pop; [PI] photo illustration; [T] toy camera effect; [M] miniature effect; [S] selective color; [SI] silhouette; [H] high key; [L] low key)

Exposure compensation	Can be adjusted by -5 to +5 EV in increments of 1/3 EV in P, S, A, M , scene and [M] modes
Exposure lock	Luminosity locked at detected value with [L] button
ISO sensitivity	ISO 100 to 25600 in steps of 1 EV; auto ISO sensitivity control available
(Recommended Exposure Index)	
Active D-Lighting	On, off
Focus	
Autofocus	Nikon Multi-CAM 1000 autofocus sensor module with TTL phase detection, 11 focus points (including one cross-type sensor) and AF-assist illuminator (range approx. 0.5 to 3 m/1 ft 8 in. to 9 ft 10 in.)
Detection range	-1 to +19 EV (ISO 100, 20°C/68°F)
Lens servo	• Autofocus (AF): Single-servo AF (AF-S); continuous-servo AF (AF-C); auto AF-S/AF-C selection (AF-A); predictive focus tracking activated automatically according to subject status • Manual focus (MF): Electronic rangefinder can be used
Focus point	Can be selected from 11 focus points
AF-area mode	Single-point AF, dynamic-area AF, auto-area AF, 3D-tracking (11 points)
Focus lock	Focus can be locked by pressing shutter-release button halfway (single-servo AF) or by pressing [L] button
Flash	
Built-in flash	[S], [S], [S], [S], [S], [S], [S], [S]: Auto flash with auto pop-up P, S, A, M : Manual pop-up with button release
Guide number	Approx. 7/22, 8/26 with manual flash (m/ft, ISO 100, 20°C/68°F)
Flash control	TTL: i-TTL flash control using 420-pixel RGB sensor is available with built-in flash; i-TTL balanced fill-flash for digital SLR is used with matrix and center-weighted metering, standard i-TTL flash for digital SLR with spot metering
Flash mode	Auto, auto with red-eye reduction, auto slow sync, auto slow sync with red-eye reduction, fill-flash, red-eye reduction, slow sync, slow sync with red-eye reduction, rear-curtain with slow sync, rear-curtain sync, off
Flash compensation	Can be adjusted by -3 to +1 EV in increments of 1/3 EV in P, S, A, M , and scene modes
Flash-ready indicator	Lights when built-in flash or optional flash unit is fully charged; flashes after flash is fired at full output
Accessory shoe	ISO 518 hot-shoe with sync and data contacts and safety lock
Nikon Creative Lighting System (CLS)	Nikon CLS supported
Sync terminal	AS-15 Sync Terminal Adapter (available separately)
White balance	
White balance	Auto, incandescent, fluorescent (7 types), direct sunlight, flash, cloudy, shade, preset manual, all except preset manual with fine-tuning
Live view	
Lens servo	• Autofocus (AF): Single-servo AF (AF-S); full-time-servo AF (AF-F) • Manual focus (MF)
AF-area mode	Face-priority AF, wide-area AF, normal-area AF, subject-tracking AF
Autofocus	Contrast-detect AF anywhere in frame (camera selects focus point automatically when face-priority AF or subject-tracking AF is selected)
Automatic scene selection	Available in [S] and [M] modes
Movie	
Metering	TTL exposure metering using main image sensor
Metering method	Matrix
Frame size (pixels) and frame rate	• 1920 × 1080, 60p (progressive)/50p/30p/25p/24p • 1280 × 720, 60p/50p Actual frame rates for 60p, 50p, 30p, 25p, and 24p are 59.94, 50, 29.97, 25, and 23.976 fps respectively; options support both ★high and normal image quality
File format	MOV
Video compression	H.264/MPEG-4 Advanced Video Coding
Audio recording format	Linear PCM
Audio recording device	Built-in monaural microphone; sensitivity adjustable

ISO sensitivity	ISO 100 to 25600
Monitor	
Monitor	7.5-cm/3-in., approx. 921k-dot (VGA) TFT LCD with 170° viewing angle, approx. 100% frame coverage, and brightness adjustment
Playback	
Playback	Full-frame and thumbnail (4, 9 or 72 images or calendar) playback with playback zoom, playback zoom cropping, playback face zoom, movie playback, photo and/or movie slide shows, histogram display, highlights, photo information, location data display, auto image rotation, picture rating and image comment (up to 36 characters)
Interface	
USB	Hi-Speed USB with Micro-USB connector; connection to built-in USB port is recommended
HDMI output	Type C HDMI connector
Bluetooth	
Communication protocols	Bluetooth Specification Version 4.1
Range (line of sight)	Approximately 10 m (32 ft) without interference; range may vary with signal strength and presence or absence of obstacles
Supported languages	
Supported languages	Arabic, Bengali, Bulgarian, Chinese (Simplified and Traditional), Czech, Danish, Dutch, English, Finnish, French, German, Greek, Hindi, Hungarian, Indonesian, Italian, Japanese, Korean, Marathi, Norwegian, Persian, Polish, Portuguese (Portugal and Brazil), Romanian, Russian, Serbian, Spanish, Swedish, Tamil, Telugu, Thai, Turkish, Ukrainian, Vietnamese
Power source	
Battery	One EN-EL14a Rechargeable Li-ion Battery
AC adapter	EH-5b AC Adapter; requires EP-5A Power Connector (available separately)
Tripod socket	
Tripod socket	1/4 in. (ISO 1222)
Dimensions/weight	
Dimensions (W × H × D)	Approx. 124 × 98 × 75.5 mm/4.9 × 3.9 × 3 in.
Weight	Approx. 445 g/15.7 oz (with battery and memory card but without body cap); approx. 395 g/14 oz (camera body only)
Operating environment	
Temperature	0 to 40°C /32 to 104°F
Humidity	85% or less (no condensation)
Accessories	
Supplied accessories	EN-EL14a Rechargeable Li-ion Battery (with terminal cover), MH-24 Battery Charger, (may differ by country or area) DK-25 Rubber Eyecup, AN-DC3 Camera Strap, BF-1B Body Cap

• The SD, SDHC and SDXC logos are trademarks of SD-3C, LLC. • PictBridge is a trademark. • HDMI, the HDMI logo and High-Definition Multimedia Interface are trademarks or registered trademarks of HDMI Licensing, LLC. • Apple®, iPhone®, iPad®, iPod touch® and App Store® are trademarks of Apple Inc., registered in the U.S. and/or other countries. • iOS is a trademark or registered trademark of Cisco Systems, Inc., in the U.S. and/or other countries and is used under license. • Android™ and Google Play™ are trademarks of Google Inc. • The *Bluetooth*® word mark and logos are registered trademarks owned by Bluetooth SIG, Inc. and any use of such marks by Nikon Corporation is under license. • Wi-Fi® is a trademark or registered trademark of the Wi-Fi Alliance®. • Products and brand names are trademarks or registered trademarks of their respective companies. • Images in viewfinders, on LCDs and monitors shown in this material are simulated.



Specifications and equipment are subject to change without any notice or obligation on the part of the manufacturer. August 2016 ©2016 Nikon Corporation

WARNING

TO ENSURE CORRECT USAGE, READ MANUALS CAREFULLY BEFORE USING YOUR EQUIPMENT.
SOME DOCUMENTS CAN BE DOWNLOADED FROM downloadcenter.nikonimglib.com.



Nikon Singapore Pte Ltd 60 Anson Road, Unit #09-01 Mapletree Anson, Singapore 079914 www.nikon.com.sg
Nikon Hong Kong Ltd. Suite 1001, 10F, Cityplaza One, 1111 King's Road, Taikoo Shing, Hong Kong www.nikon.com.hk
Nikon (Malaysia) Sdn. Bhd. Unit 100.07.015, Block J, Level 7, 129 Offices, Jaya One, No. 72A, Jalan Universiti, 46200 Petaling Jaya, Selangor Darul Ehsan, Malaysia www.nikon.com.my
Nikon Australia Pty Ltd. Suite 501, Level 5, 5 Rider Boulevard, Rhodes, NSW 2138, Australia www.nikon.com.au
Nikon India Private Limited Plot No. 71, Sector 32, Institutional Area, Gurgaon 122001, Haryana, India (CIN-74999HR2007FTC036820) www.nikon.co.in
Nikon Sales (Thailand) Co., Ltd. 1 Empire Tower, 45th Floor, River Wing East, South Sathorn Rd, Yannawa, Sathorn, Bangkok 10120, Thailand www.nikon.co.th
Nikon Middle East FZE Level 4, The Galleries Bldg. 2, Downtown Jebel Ali, P.O. Box 261908, Dubai, UAE www.nikon-me.com
PT Nikon Indonesia 35th Floor, Wisma 46 - Kota BNI, Jl. Jend. Sudirman Kav.1, Jakarta, 10220, Indonesia www.nikon.co.id
NIKON CORPORATION Shinagawa Intercity Tower C, 2-15-3, Konan, Minato-ku, Tokyo 108-6290, Japan www.nikon.com